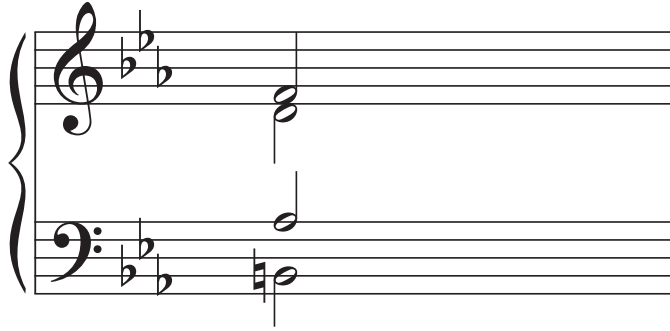


Name: _____

Resolving vii^{o7}

Handout

Exercise 1



Cm: vii^{o7}

Default guidelines for resolving vii^{o7}:

1. The leading tone resolves
_____.
2. All the other voices resolve
_____.

Exercise 2



Em: vii^{o6}₅

! Exception! !

If you run into _____,
avoid it by _____.

Exercise 3



Dm: vii^{o4}₃

Tritone resolution:

Diminished fifths typically resolve
_____ to a _____.

Augmented fourths typically resolve
_____ to a _____.

How do $vii^{\circ 7}$ chords function? Each inversion of $vii^{\circ 7}$ functions similarly to the inversion of _____ that has the same _____.

$vii^{\circ 7}$ has _____ in the bass, and so it functions similarly to _____.

$vii^{\circ 6}_5$ has _____ in the bass, and so it functions similarly to _____.

$vii^{\circ 4}_3$ has _____ in the bass, and so it functions similarly to _____.

All of these chords function as _____.

Example 1 - Haydn, String Quartet in G, op. 17/5, mvmt. III (1771)



Example 2 - Beethoven, Piano Sonata Op. 13 “Pathétique,” mvmt. III (1798)

RONDO
Allegro

